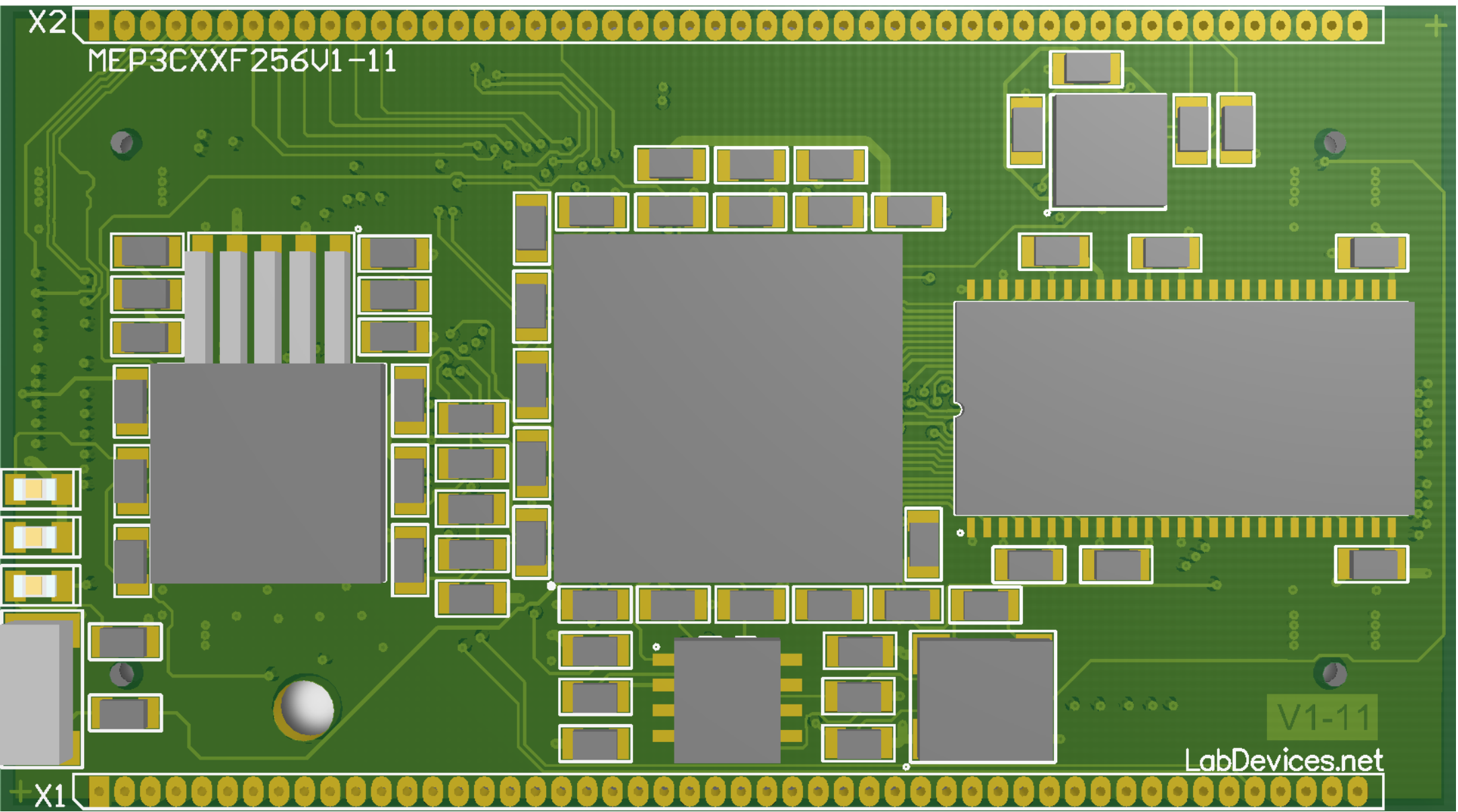


J1, J2 on Bottom Layer FX10A-80P/8-SV 0.5mm x 80  
 X1, X2 SIL 1.27mm x 50

X2

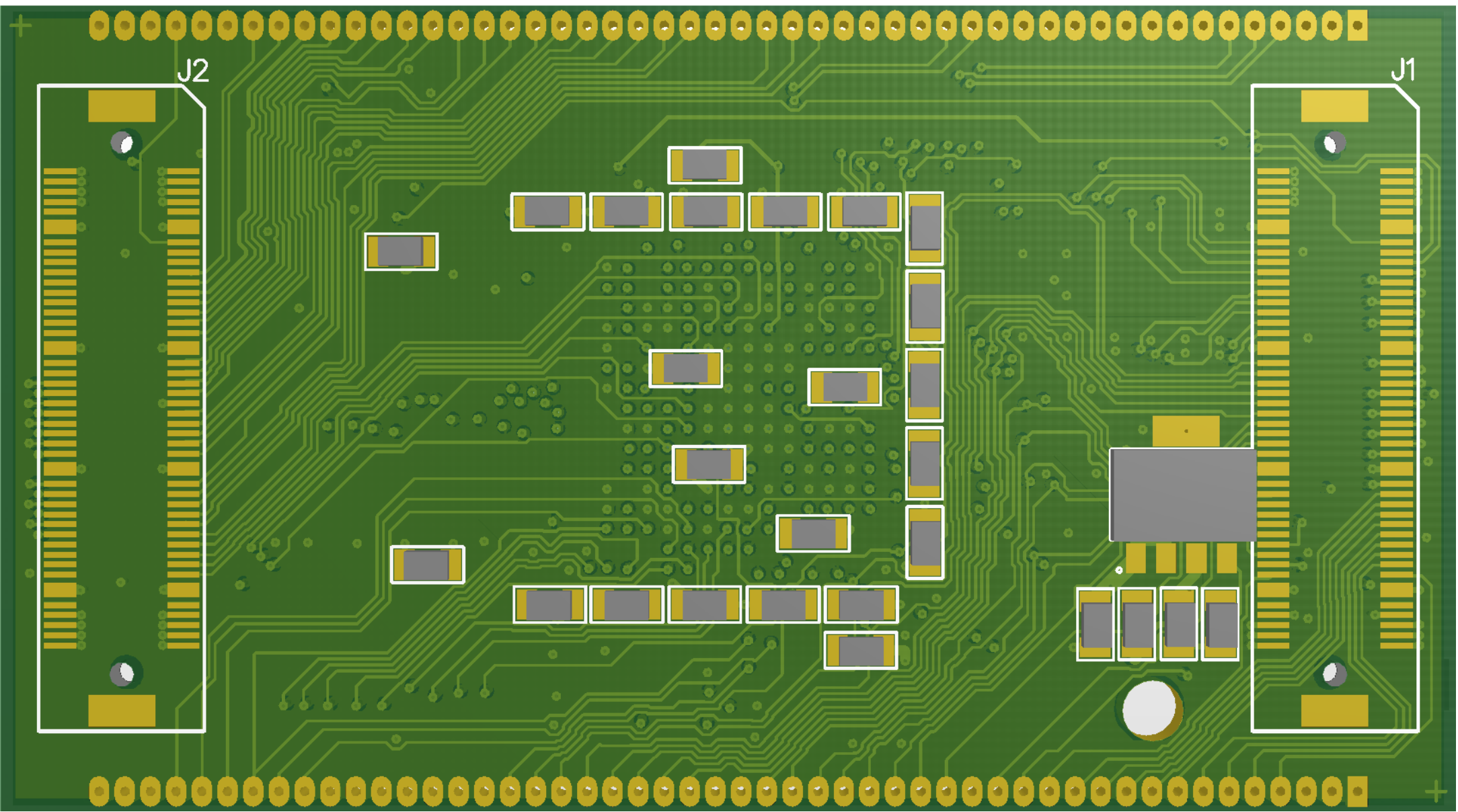
MEP3CXXF256V1-11



V1-11

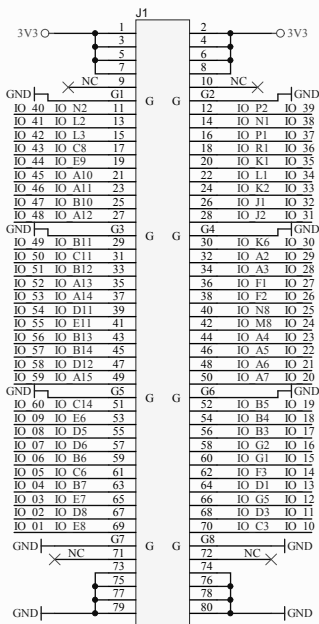
LabDevices.net

X1

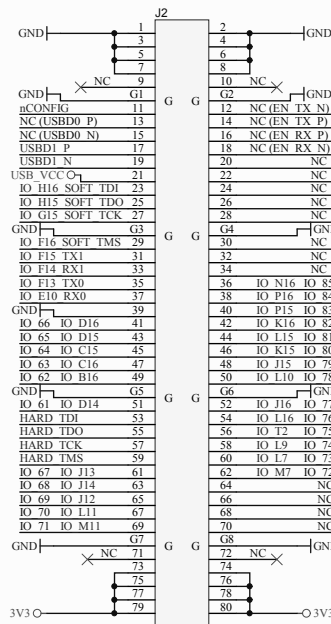


J2

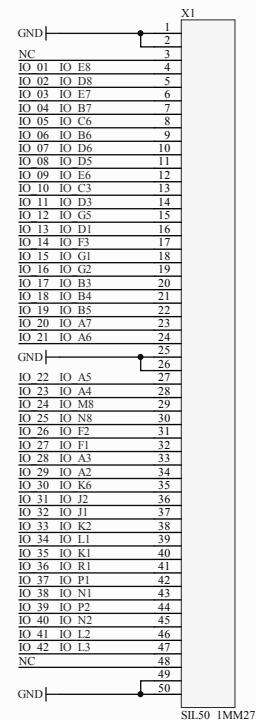
J1



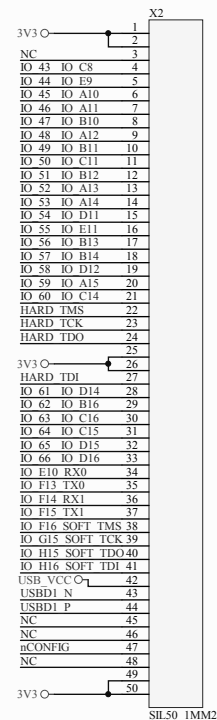
Sub1  
FpgaIO.SchDoc



Sub2  
FpgaCore.SchDoc

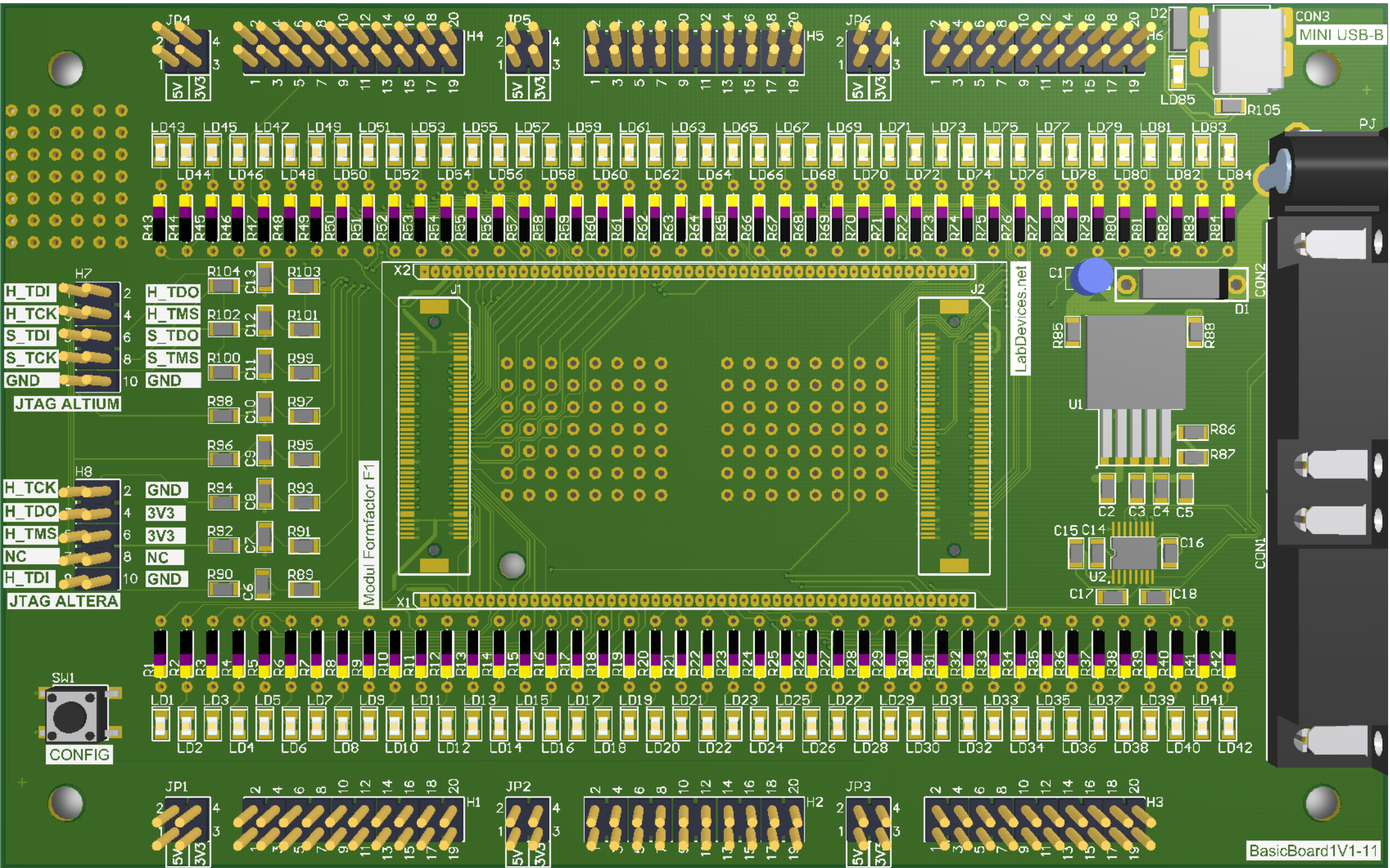


SIL50\_1MM27



SIL50\_1MM27

Project			Schmitt Electronics GmbH <a href="http://www.labdevices.net">www.labdevices.net</a>	
Title			Copyright (c) 2011 by Schmitt Electronics GmbH	
Size: A3			All rights reserved	
Number:	Revision:	Date: 12.05.2011	Time: 00:32:16	Sheet of
File: C:\Users\HSchmitt\Desktop\AD2010-2011\Projects\MEP3CXFP256V1-11\ModulTop.SchDoc			This Document is subject to change without notice	



# Available MEP3CXXF256 Products

*Modules, Starter-Kits (Hardware, small volume) In house production*

*Board Layout Fabrication Outputs (Extended Gerber Files)*

*Board Layout Source (Altium)*

*Schematics Source (Altium)*

*Licence for volume production for ordering directly from an industrial board supplier*

Project			Schmitt Electronics GmbH <a href="http://www.labdevices.net">www.labdevices.net</a>
Title			Copyright (c) 2011 by Schmitt Electronics GmbH
Size: A3	Number:	Revision:	All rights reserved
Date: 12.05.2011	Time: 00:32:21	Sheet of	This Document is subject to change without notice
File: C:\Users\HSchmitt\Desktop\AD2010-2011\Projects\MEP3CXXF256V1-11\AvailableProducts.SchDoc			